

KALAM 300

Your ideas, our technology, endless possibilities.

Kalam is our extrusion based 3d printer which is fully indigenously made and it is extremely user friendly. It is an idea machine for students, institutions, prototyping and small batch production. It is a very minimalist printer making it easy to use and the best tool to start your journey in AM.

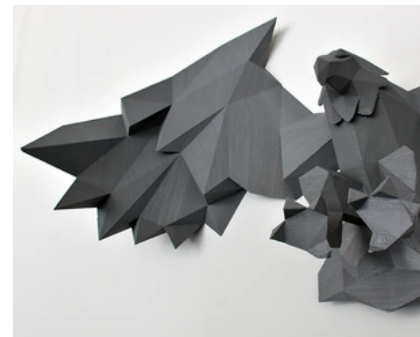


SPECIFICATIONS

- BUILD VOLUME : 300X300X300
- NOZZLE DIAMETER : INTERCHANGEABLE
(0.2-0.6)
- FILAMENT DIAMETER : 1.75MM
- HEATED BED : YES
- CONNECTIVITY : USB, SD CARD
- FILE FORMAT : STL, OBJ

MATERIALS SUPPORTED

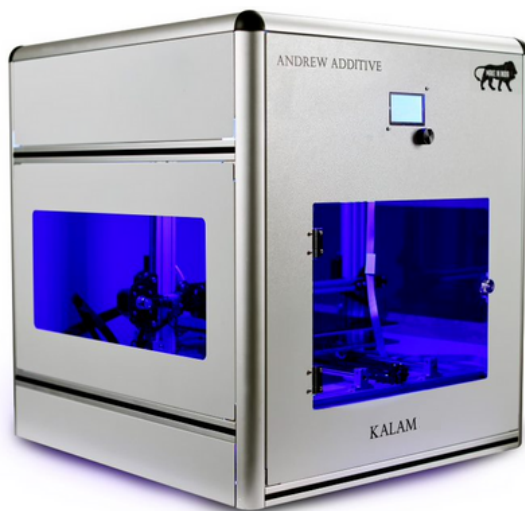
It can be used to print PLA, ABS and TPU. Some of the applications of the machine are prototyping, consumer goods, automobile and mobility, architecture and low-volume production.



KALAM 500

Bring your Imagination to Life with High-Quality 3D Prints.

Introducing Kalam 500: Our groundbreaking indigenous 3D printer, harnessing the prowess of extrusion technology. It boasts remarkable user-friendliness, making it the ultimate choice for students, institutions, and, most notably, for revolutionizing industrial production needs. This exceptional minimalist machine serves as your gateway to the future of additive manufacturing, seamlessly combining simplicity and efficiency within a single, all-encompassing package. Our machine's capabilities extend to printing molds for prototypes, thereby facilitating innovation across industries. It's more than just a 3D printer; it's a transformative update that will revolutionize every sector it touches.



SPECIFICATIONS

- BUILD VOLUME : 500 X 500 X 500
- NOZZLE DIAMETER : INTERCHANGEABLE
- (0.2-0.6)
- FILAMENT DIAMETER : 1.75MM
- HEATED BED : YES
- CONNECTIVITY : USB, SD CARD
- FILE FORMAT : STL, OBJ

MATERIALS SUPPORTED

It can be used to print PLA, ABS, PLA-Wood, PLA-CF, PEEK, PMMA, Ceramic, PP and TPU. Some of the applications of the machine are prototyping, consumer goods, automobile and mobility, architecture and low-volume production.

